




The More You Know 

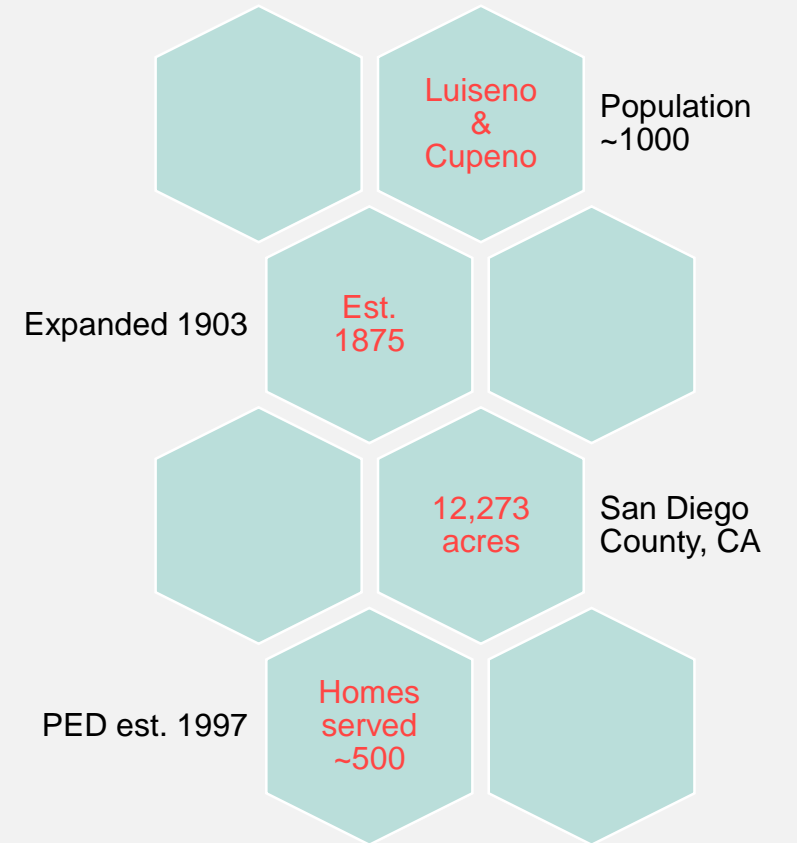
about tracking

Solid Waste & Household Hazardous
Waste Tracking Methods/Forms

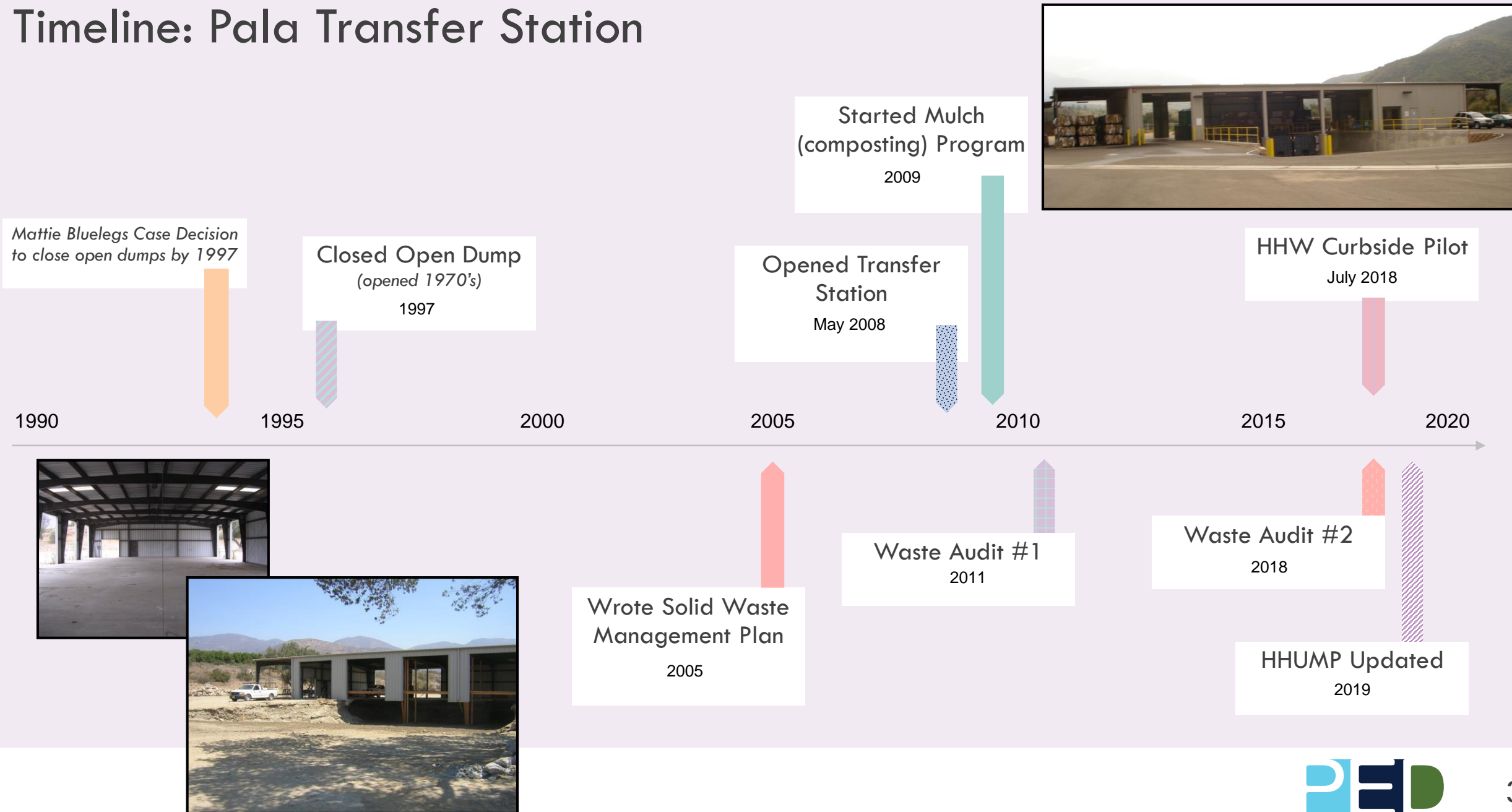
PALA HISTORY



Pala Reservation, 1905



Timeline: Pala Transfer Station





HHW Storage Area



Bailer – Cans & Cardboard

HHW – Weekly Inspection Checklist

HAZARDOUS WASTE STORAGE AREA INSPECTION CHECKLIST

Business Name: _____ Business Address: _____

Person responsible for weekly container inspections: _____

Month Year	Weekly Hazardous Waste Container Inspection					Comments
	Date	Date	Date	Date	Date	
Inspection Item						
Containers marked properly name/address contents/composition physical state/hazard properties start date						
Stored 90/180/365 days or less						
No leaks/staining						
Closed tops/bungs						
No dents/corrosion						
Incompatible wastes and materials stored separately						
Aisle space maintained						
Secondary containment liquid free						
Inspector's Initials						
Overall Comments:						

In General:

- Acids must be segregated from ignitables.
- Acids must be segregated from caustics.
- Corrosives should be segregated from flammables.
- Oxidizers should be segregated from EVERYTHING.
- Many corrosives are water-reactive.
- Most organic reactives must be segregated from inorganic reactives (metals).

INCOMPATIBLE WASTES - Some Deadly Combinations -

- Acids + Oil or Grease = FIRE
- Acids + Caustics = HEAT/SPATTERING
- Caustics + Epoxies = EXTREME HEAT
- Chlorine Gas + Acetylene = EXPLOSION
- Flammable Liquids + Hydrogen Peroxide = FIRE/EXPLOSION
- Aluminum Powder + Ammonium Nitrate = EXPLOSION
- Sodium Cyanide + Sulfuric Acid = LETHAL GAS
- Ammonia + Bleach = LETHAL GAS

HM-9322-2 (08/10)




Mulch Grinder





Tracking Forms

Recycling
Household Hazardous & Universal Waste
Trash Collection



Tracking

❖ SOP's

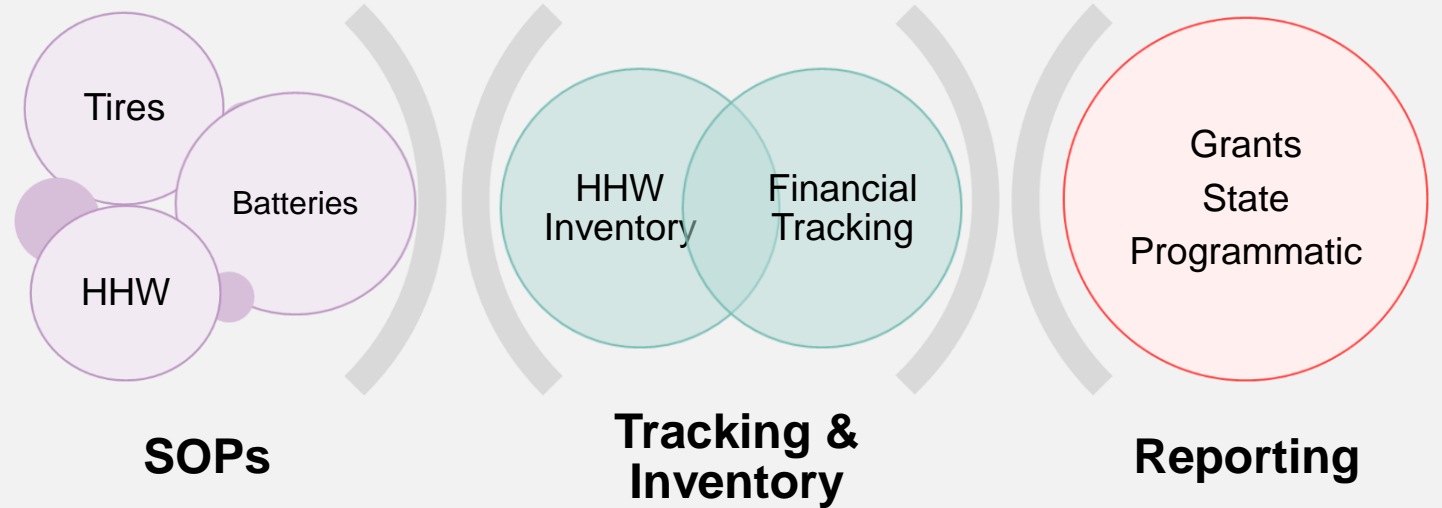
- ❖ HHW Event
- ❖ Battery Collection
- ❖ Tire Collection

❖ Tracking & Inventory

- ❖ HHW Event Inventory
- ❖ HHW Curbside Log
- ❖ Recycling Curbside Log
- ❖ EDCO (*trash*) Bin Pick-Up Log
- ❖ Weekly Inspection of HHW Storage Area Form

❖ Reporting

- ❖ Reporting Diversion Rates
- ❖ Tracking Income/Expenses
- ❖ Tracking Funding Sources



SOP's for your Program *(standard operating procedures)*

Pala Tire Collection & Disposal SOP

Funded by a grant from USEPA
All tires will be collected at the Pala Tribal Transfer Station

RULES for Tire Collection

AMNESTY EVENT RULES:

- * Tires can be accepted from any resident of San Diego County (not limited to just Pala residents)
- * Transfer Stn. Staff must log in the following information for **EVERYONE** who brings tires
Log the following info into [Amnesty Log Sheet \(2nd tab\)](#);
Name, Address, Inventory of type of tires
- * **Only accept up to 9 tires at a time from individuals** who don't have waste tire hauler's license
- * **Only accept up to 20 tires per individual, per amnesty event**
- * If individuals brings 10 or more tires (at a time) w/o a license, we must report them to CIWMB
- * Advertising for Event **must** state: event is limited to 20 tires per individual; individuals can carry no more than 9 tires without a tire hauler's license; funding is provided by CIWMB (with logo).
- * Please take some pictures during the collection event, for grant reports
- * Please give Heidi/Frank completed log sheets, after event is over

CLEANUP SITE RULES:

- * Tires can be accepted by any Pala Residents, or outside individuals (with prior PE PA Approval)
- * Transfer Stn. Staff must log in the following information for **EACH SITE** where tires are collected
Log the following info into [Illegal Cleanup Log Sheet \(3rd tab\)](#);
Name, Address, Inventory of type of tires
- * Please take some pictures during the cleanup event, for grant reports
- * Please give Heidi/Frank completed log sheets, after event is over

- * **RESTRICTIONS:** Individuals can bring tires to TS, only 9 at a time
TS Staff can load up truck, since they have a Waste Tire Hauler's License
Off-Reservation Sites must be pre-approved by Pala EPA

RULES for Tire Disposal

- * Give Frank/Heidi final inventory counts on: [Amnesty Log Sheet \(2nd tab\)](#)
[Illegal Cleanup Log Sheet \(3rd tab\)](#)
- * Frank will do a cost estimate b/t bringing tires to disposal company ourselves, or by bidding out work

Waste Tire Hauling Limits (Title 14, CA code of regulations):

- * We cannot accept tires from registered used/waste tire haulers & tire-related businesses
This event is not intended for the disposal of waste tires from waste tire generating businesses or waste tire haulers.
- * We can **accept up to 9 tires from individuals** who are not registered waste tire haulers
- * If individuals have more than 9 tires, they must make multiple trips, or have approval from the LEA (LEA=Local Enforcement Agency)
- * Individuals **hauling 10-20 tires must obtain written authorization** from Local Enforcement Agency (LEA) prior to the amnesty event date. If the individual has not received written authorization, we need to report this information on the Unregistered Hauler & Comprehensive Trip Log Substitution Form (CIWMB 204) & submit the form to CIWMB within 30 days of event.

Pala Tire Amnesty Collection Event

Tires collected at the Pala Transfer Station: 12802 Highway 76, Pala, CA 92059

EVENT DATE: August 24 - 29, 2009

	Name	Address	Inventory of Tires Collected								Total Tires
			Passenger		Truck		ATV		Motorbike		
			Rims	AE Rims	Rims	AE Rims	Rims	AE Rims	Rims	AE Rims	
1											0
2											0
3											0
4											0
5											0
6											0
7											0
8											0
9											0
10											0
11											0

Household & Auto Battery Log Sheet

Batteries collected at: Tribal Transfer Station; Pala Administration Building; Pala Fire Station; Pala Cultural Center

	Start of Collection Date	End of Collection Date	Site of Collection	Inventory of Batteries & Portable Electronics Collected				Total Batteries
				Common Household Battery	Rechargeable Lithium	Auto	Total Weight	
1								0
2								0
3								0
4								0
5								0
6								0
7								0
8								0

Tracking & Inventory

Curbside Collection Participation

Number of Houses Collected Today: _____

Number of HHW Bins with Non-HHW Items: _____

Types of Non-HHW Found in HHW Bins: _____

Pala Curbside Household Hazardous Waste Collection Form Household Hazardous Waste (HHW) Collection Form

The Pala Transfer Station declares that this material is household waste and not from a business or commercial operation.

Collected By: _____ Date: _____

This section to be filled out by transfer station staff.

Check all that apply with amounts below:

Household Cleaning Products

- _____ oz Abrasive Cleaners & Powders
- _____ oz Ammonia Based Cleaners
- _____ oz Bleach
- _____ oz Carpet Cleaners
- _____ oz Disinfectants
- _____ oz Drain Cleaners
- _____ oz Floor Cleaners
- _____ oz Furniture Polish
- _____ oz Oven Cleaners
- _____ oz Spot Removers
- _____ oz Toilet Bowl Cleaners

Electronic Waste

- _____ qty Desktop Computers
- _____ qty Laptops
- _____ qty Screens
- _____ qty Televisions
- _____ qty Cell Phones

Miscellaneous Products

- _____ qty Chemistry Set
- _____ oz Photographic Chemicals
- _____ oz Pool Chemicals
- _____ oz Air Conditioning Refrigerants
- _____ oz Insecticides
- _____ oz Fungicides/Wood Preservatives
- _____ qty Smoke Detector
- _____ Explosives (describe)
- _____ Ammunition (describe)

Automotive Products

- _____ qty Car Batteries
- _____ gal Used Motor Oil
- _____ qty Used Motor Oil Filters
- _____ gal Antifreeze
- _____ gal Gasoline
- _____ oz Brake Fluids
- _____ oz Car Wax & Cleaners
- _____ oz Transmission Fluids
- _____ oz Metal Cleaners & Polishers
- _____ oz Fuel Additives
- _____ oz Grease & Rust Solvents
- _____ oz Carburetor Cleaners
- _____ oz Fuel Injection Cleaners
- _____ oz Starter Fluid

Home Improvement Products

- _____ oz Adhesives
- _____ oz Caulk
- _____ oz Strippers & Removers
- _____ gal Latex Paint
- _____ gal Oil Based Paints
- _____ gal Rust Inhibiting Paints
- _____ gal Stains & Finishes
- _____ oz Thinners & Turpentine
- _____ oz Wood Preservatives
- _____ ft Treated Wood

Other (describe) continue on reverse side as needed:
Quantity Material

Other Common HHW

- _____ qty Propane Tanks
- _____ qty Propane cylinders
- _____ qty Fluorescent Light Tubes & Bulbs
- _____ qty Light Ballasts
- _____ qty *Household Batteries
- _____ qty Inks & Printer/Toner Cartridges
- _____ oz Liquid Cooking Oil
- _____ qty Mercury Thermometers
- _____ qty Mercury Switches & Thermostat
- _____ oz Aerosol Sprays
- _____ qty Nail Polish & Removers
- _____ Pharmaceuticals - prescription
- _____ & over-the-counter pills/liquids
- _____ qty Sharps

Pest Control Products (Pesticides)

- _____ 2,4-D
- _____ Chlordane
- _____ Diazinon
- _____ Dioxin Pesticides
- _____ Fungicides
- _____ Herbicides
- _____ Insecticides & Insect Repellent
- _____ Mothballs
- _____ Rat Poisons
- _____ Weed B Gone
- _____ Roundup

Other (describe):

Quantity Material

Tracking Sheets

Household Hazardous Waste Curbside Collection

Tracking Pala's Curbside HHW Pilot

	Material	Quantity/ Week								
		4-Jul	11-Jul	18-Jul	25-Jul	1-Aug	8-Aug	15-Aug	22-Aug	29-Aug
Liquids	Motor Oil	8	3	5			1	3	6	3
	Pool Chemicals								1	
	Paint/ Nail Polish	15	2		1	5	2	7	1	2
	Household Cleaners	1		3	1			3		
	Drain Cleaner									
	Antifreeze			2						
	Solvent	4			1	2		1		
Solids	Batteries- Household	container	36	24	36	2	48	92	40	88
	Batteries- Car			1				2	4	
	Pesticides	3		1		1			2	
	Motor Oil Filters		3	1		1	1	1	1	2
	Printer Cartridges	15	4	1	3					
Misc.	Light Bulbs	15	1				4	4	8	2
	E-Waste	24	6	6		4	9	12	7	52
	Appliances			2						
Non HHW	Other	19	8	16	14	15	7	21	36	23
	Non HHW	5 containers worth	20	27	38	77	14	79	23	55



Reporting

- ❖ Reporting Diversion Rates
- ❖ Tracking Income/Expenses
- ❖ Tracking Funding Sources

Date of pick up	Vendor	Descrip.	# of pallets	# of Items	Gross weight lbs.	Price per lb.	Shipping Report #	Date pymt rec'd	Amount rec'd	TS or Casino
7/15/10	Interstate Batteries	auto	1		1734	\$ 0.18	554011	7/16/10	\$ 312.12	TS
3/21/11	Interstate Batteries	auto	1	34	1356	\$ 0.25	555785	3/23/11	\$ 339.00	TS
5/16/11	Interstate Batteries	auto	1		2043	\$ 0.25	556138	5/20/11	\$ 510.75	TS
9/9/11	Interstate Batteries	auto	1	85	2043	\$ 0.24	556949	10/26/11	\$ 490.32	TS
3/23/12	Interstate Batteries	auto	1	75	1631	\$ 0.25	557841	4/2/12	\$ 407.75	TS
11/6/12	Interstate Batteries	auto	1		602	\$ 0.25	9730	11/13/12	\$ 150.50	TS
8/9/13	Interstate Batteries	auto	1		830	\$ 0.25	560486	8/14/13	\$ 207.50	TS
1/8/14	Interstate Batteries	auto	1		967	\$ 0.25	561406	1/13/14	\$ 241.75	TS
6/16/14	Interstate Batteries	cores	1		1444	\$ 0.25	562909	6/19/14	\$ 361.00	TS
9/11/14	Interstate Batteries	cores	1		1122	\$ 0.25	563438	9/16/14	\$ 280.50	TS
4/17/15	Interstate Batteries	pallet	1		875	\$ 0.22	564809	4/22/15	\$ 192.50	TS
6/22/15	Interstate Batteries	pallet	1		700	\$ 0.22	565175	6/22/15	\$ 154.00	TS
10/16/15	Interstate Batteries	pallet	1		407	\$ 0.20	566062	10/21/15	\$ 81.40	TS
3/10/16	Interstate Batteries	pallet	1		1377	\$ 0.16	566897	3/15/16	\$ 213.92	TS
7/28/16	Interstate Batteries	pallet	1		820	\$ 0.20	567704	8/2/16	\$ 164.00	TS
3/7/17	Interstate Batteries	pallet	1		724	\$ 0.20	568734	3/7/17	\$ 144.80	TS

Reporting

Recycling is Easy!
Here's what you
CAN and **CAN'T** put in your
blue recycling bin.



DO RECYCLE:

- Writing paper
- Computer paper
- Newspaper
- Flattened cardboard
- Flattened boxes
- File folders
- Junk mail
- Phone books
- Magazines
- Shredded paper
- Paper packaging
- Paper bags
- Styrofoam packaging (NO packing peanuts)
- Aluminum cans
- Glass bottles & jars (all colors)
- Steel (tin) cans
- All plastic bottles, jugs, & containers marked ♻️ through ♻️ or labeled "CA Redemption Value"
- Cartons

Pala Recycles!

DON'T RECYCLE:

- Disposable plates or cups, paper towels, tissue, carbon paper, plastic bags (including grocery bags, newspaper delivery bags, or chip/snack bags), ceramics, drinking glasses, mirrors, Styrofoam packing peanuts, batteries, lightbulbs, clothing, or shoes



760-742-1781
ped.palatribe.com/pala-transfer-station

Accepted Recycling Materials

- Aluminum Cans
- Glass
- California Redemption Value (CRV) Glass
- Mixed Paper/Paperboard
- Clothes
- Corrugated Cardboard
- CRV Plastic
- Recyclable Plastics (#1-5)
- E-Waste
- Green Waste

Who Pays Who??

\$\$- TRIBE

- Mixed / Newspaper/ Cardboard
- E- Waste
- CRV (aluminum, plastic, glass)
- Bi-Metal (tin)

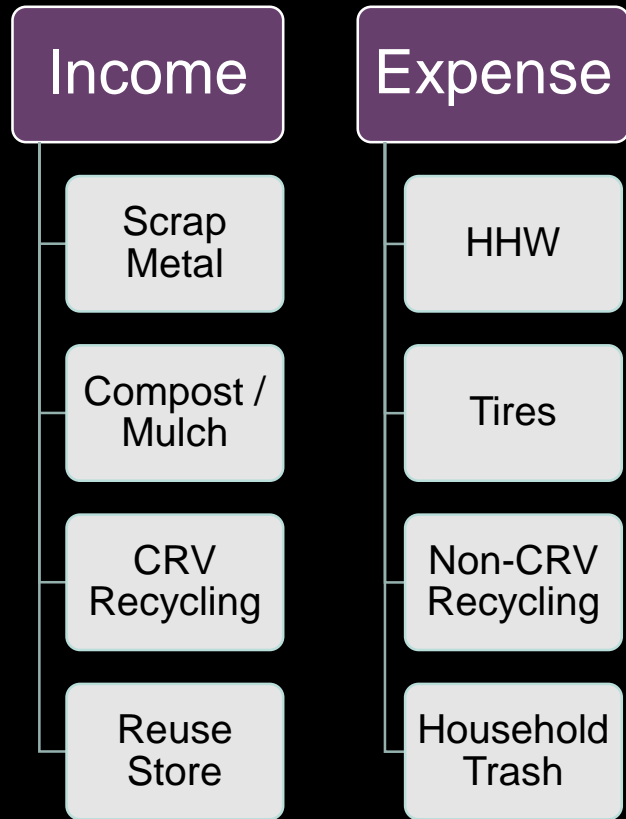
\$\$- CASINO

- Mixed Paper/ Cardboard
- CRV

\$\$- CUSTOMER

- CRV

Reporting – tracking funding sources



Grant Funding

- Gap (USEPA)
- 319 NPS Base
- CalRecycle Tire Grant

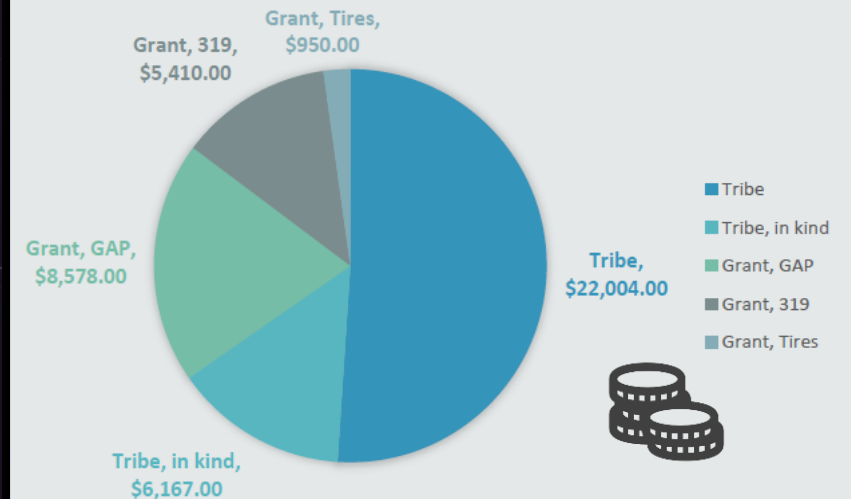
Tribal Funding

- Tribal Funds
- Transfer Station Income
- Tribal In Kind Services

Expenses Covered By:

\$ 14,938.01	Grants	35%
\$ 22,004.40	Tribe	51%
\$ 6,167.04	In Kind (labor)	14%
\$ 43,109.45		

DIAZ CLEANUP 2017 - EXPENSES



OTHER ITEMS TO TRACK



Financials



Grant \$\$



Reports



Waste from other departments



Accurately track what each department disposes of, and the associated cost (so they can be charged later)

Income vs. Expenses



Are you breaking even??

Can you tweak your collection & find markets to get rid of some materials (instead of paying)

Grant Tracking



Funding Sources

\$\$ vs. In Kind \$'s

Track % of Salary Time

Report it
for everyone's sake



Waste Audit Report

Conducting a waste audit defines your baseline (current situation), & informs your program goals by defining your roadmap.



SWMP

Solid Waste Management Plan

Outlines what you collect, how you store it, & how you dispose of that material.



HHUMP

Household Hazardous & Universal Waste Management Plan

Outlines proper collection, storage, & disposal of HH & Universal Wastes

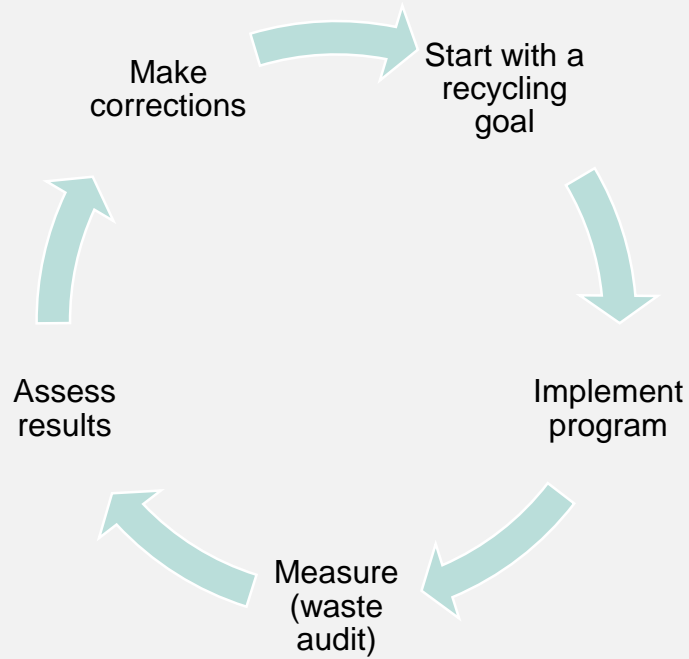


Reporting

What do you do with all that tracking data?



Look at your results....



Results of Pilot

Slight increase of curbside recycling

- Increase in the weight of our non-CRV bins
- Increase in quantity recycled at curbside

Drop-off in participation halfway through

- Direct correlation between a drop-off in our outreach & a drop-off in curbside participation

Evaluating Results & Outlining our Next Steps

- Crunch the #'s & see what worked/what didn't work
- Take what worked, scale it up
- Review the barriers & brainstorm new ways to tackle them

- Continue outreach
- Need to purchase more blue bins
- HHW Curbside Pilot Program
- Updating Tribal Codes
- Increase quantity & accuracy of recycling at tribal buildings

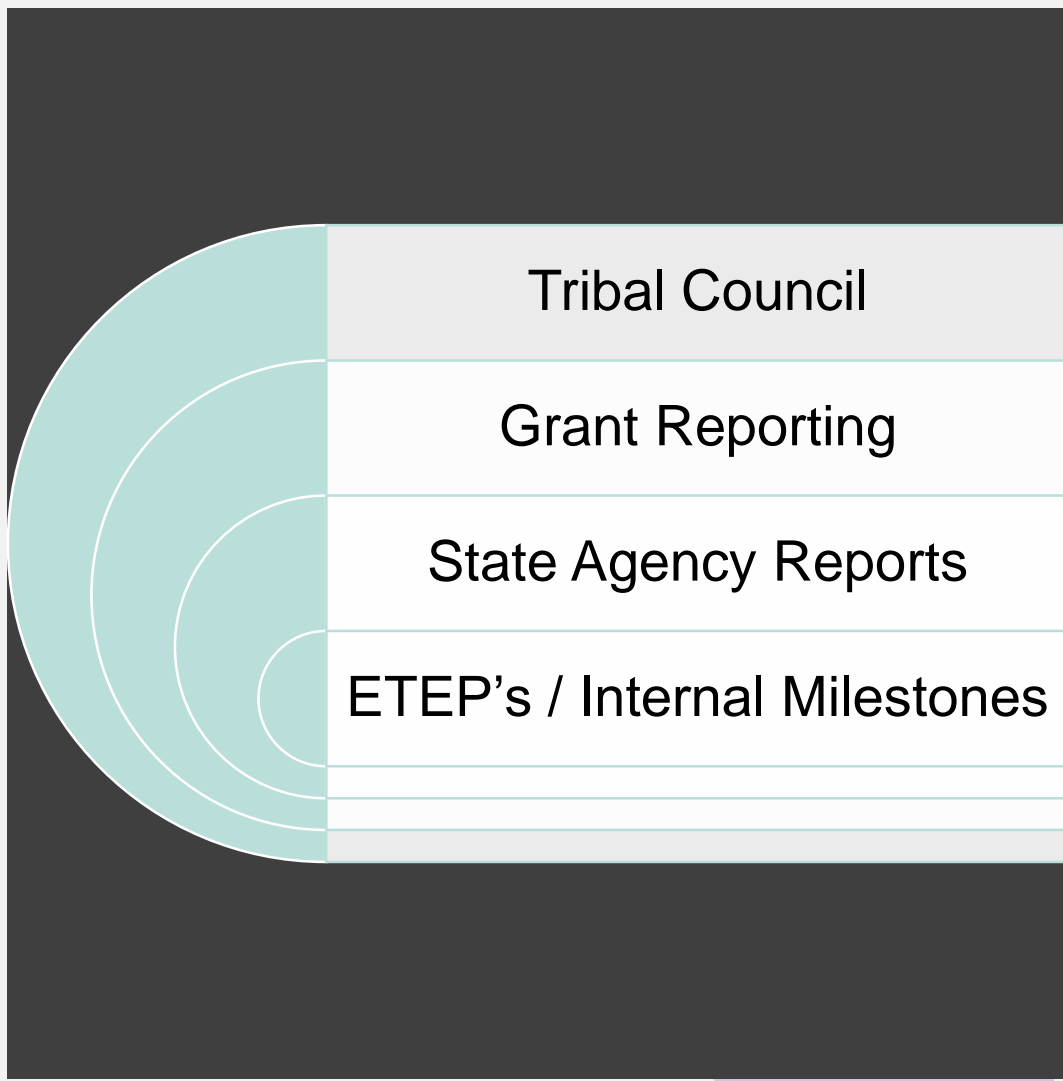
Tracking Pala's Curbside Recycling Pilot

WEEKLY LOG / Pala Transfer Station

Curbside / Blue Bin Materials Only - materials that do NOT end up in co-mingled EDCO Recycling Bin

Week Date	Total / Incoming Weight of Curbside	Aluminum (Cans) Weight	Plastic (CRV) Weight	Glass (CRV) Weight	Cardboard Weight	Total CRV diverted for curbside	[calculated weight for EDCO comingled bin]	curbside participation
April 18-20	1045	9	26.5	81.5	453	570	475	83
April 25-27	894	13.5	25	54	356	448.5	445.5	83
May 2-4	837	11	28.5	32.5	359	431	406	90
May 9-11	898	14	37	63.5	526	640.5	257.5	80
May 16-18	742	7	15	50.5	350	422.5	319.5	84
May 23-25	777	5.5	14	39.5	320	379	398	75
May 30 - June 1	964	4.5	34.5	63.5	418	520.5	443.5	76
June 6-8	901	6	10	40	399	455	446	79
June 13-15	736.5	5.5	17.5	44.5	284	351.5	385	70
June 20-22	872	7	20	59	375	461	411	
June 27-29	578	8	24	27	241	300	278	

Reporting



Year	Objective / Intermediate Program Development Milestone <i>(includes pursuing needed assistance and resources)</i>	Role (Tribe/ EPA)	Area	Category	Source of Objective	Primary Staff Responsibility	Secondary Staff Responsibility #1	Secondary Staff Responsibility #2
2018	Advertise and host tire amnesty events to collect waste tires; Arrange pickup and removal of tires from tire amnesty events	Tribe	Waste	Implementation	2017 Tire Amnesty Grant	ET	TSS	TSA
2019	Advertise and host tire amnesty events to collect waste tires; Arrange pickup and removal of tires from tire amnesty events	Tribe	Waste	Implementation		ET	TSS	TSA
2020	Advertise and host tire amnesty events to collect waste tires; Arrange pickup and removal of tires from tire amnesty events	Tribe	Waste	Implementation		ET	TSS	TSA
2021	Advertise and host tire amnesty events to collect waste tires; Arrange pickup and removal of tires from tire amnesty events	Tribe	Waste	Implementation		ET	TSS	TSA
2018	Advertise, arrange, and conduct HHW removal at bi-annual cleanup events and upon request	Tribe	Waste	Implementation	FY18 GAP Work Plan	ET	TSS	TSA
2019	Advertise, arrange, and conduct HHW removal at bi-annual cleanup events and upon request	Tribe	Waste	Implementation	FY19 GAP Work Plan	ET	TSS	TSA
2020	Advertise, arrange, and conduct HHW removal at bi-annual cleanup events and upon request	Tribe	Waste	Implementation		ET	TSS	TSA
2021	Advertise, arrange, and conduct HHW removal at bi-annual cleanup events and upon request	Tribe	Waste	Implementation		ET	TSS	TSA
2018	Annually review and update the Waste ETEP component, obtaining input from relevant departments, leaders, and other stakeholders	Tribe	Waste	Planning		ET	TSS	ED
2019	Annually review and update the Waste ETEP component, obtaining input from relevant departments, leaders, and other stakeholders	Tribe	Waste	Planning		ET	TSS	ED

Example: Pala's ETEP



Date of pick up	Vendor	Descrip	# of Bales	Weight in lbs.	Adjusted weight	Weight in Tons	Price per ton	Transport fee	Date pymt rec'd	Amount rec'd	Date Check Req.	\$ Amt.
1/2/19	Green Earth	baled	12	11,682	11658	5.829	\$ 60.00	\$ 50.00	1/22/19	\$ 349.74		
1/18/19	Green Earth	baled	15	14,281	14281	7.1405	\$ 55.00	\$ 50.00	1/31/19	\$ 392.71		
								\$ 100.00		\$ 742.45	2/5/19	\$ 642.45
1/31/19	Green Earth	baled	13	12,591	12511	6.2555	\$ 30.00	\$ 50.00	2/15/19	\$ 187.67	3/6/19	\$ 137.67
2/22/19	Green Earth	baled	3	2,917	2877	1.4385	\$ 35.00	\$ 50.00	3/19/19	\$ 50.35		
2/22/19	Green Earth	baled	14	13,605	13562	6.781	\$ 35.00		3/19/19	\$ 237.34		
3/8/19	Green Earth	baled	14	13,864	13670	6.835	\$ 30.00		3/19/19	\$ 205.05		
								\$ 50.00		\$ 492.74	4/5/19	\$ 442.74
4/17/19	Green Earth	baled	13	13,477	13370	6.685	\$ 20.00		5/6/19	\$ 133.70	5/6/19	\$ 133.70
3/27/19	Green Earth	baled	14	13,876	13785	6.8925	\$ 20.00		6/5/19	\$ 137.85		
5/2/19	Green Earth	baled	12	12,237	12070	6.035	\$ 10.00	\$ 50.00	6/5/19	\$ 60.35		
5/15/19	Green Earth	baled	12	12,998	12900	6.45	\$ 10.00		6/5/19	\$ 64.50		

Reporting

Track every transaction/pickup
Track the date, weight, transportation costs
Track the cost or payment

plastic												
Date of pick up	Vendor	Description	# of Bales	Gross weight lbs.	Net weight lbs.	Price Per lbs.	Transport fee	Date pymt rec'd	Amount rec'd	TS or Casino	State CRV pymt dates	TYPE
1/23/19	Green Earth	plastic #1	2	1,212	1,197	\$ 1.0600		2/15/19	\$ 71.82	TS		
1/23/19	Heavy Metal Scrap	state redemption		1,212	1,212	\$ 1.2800		2/15/19	\$ 1,551.36	TS	12/12/18 - 12/28/18	PET1
1/23/19	Green Earth	plastic #1	2	1,206	1,194	\$ 0.0600		2/15/19	\$ 71.64	TS		
1/23/19	Heavy Metal Scrap	state redemption		1,206	1,206	\$ 1.2900		2/15/19	\$ 1,555.74	TS	1/7/19 - 1/12/19	PET1
2/22/19	Green Earth	plastic #1	3	1,761	1,753	\$ 1.0700		3/19/19	\$ 122.71	TS		
2/22/19	Heavy Metal Scrap	state redemption		1,761	1,761	\$ 1.2800		3/19/19	\$ 2,254.08	TS	1/25/19 - 2/19/19	PET1
3/29/19	Green Earth	plastic #1	4	2,431	2,372	\$ 1.0900		5/16/19	\$ 213.48	TS		
3/29/19	Heavy Metal Scrap	state redemption		2,431	2,431	\$ 1.2900		5/16/19	\$ 3,135.99	TS	2/27/19 - 3/25/19	PET1
5/24/19	Green Earth	plastic #1	6	3,650	3,630	\$ 0.0700		6/24/19	\$ 254.10	TS		
5/24/19	Heavy Metal Scrap	state redemption		3,650	3,650	\$ 1.2900		6/24/19	\$ 4,708.50	TS	4/4/19 - 5/21/19	PET1
5/24/19	Green Earth	PET 2	1	237	229	\$ 0.0400		6/24/19	\$ 9.16	TS		
5/24/19	Heavy Metal Scrap	state redemption		232	232	\$ 0.6000		6/24/19	\$ 139.20	TS	4/10/19 - 4/11/19	HDPE 2
6/20/19	Green Earth	plastic #1	3	1,815	1,780	\$ 0.0700		7/9/19	\$ 124.60	TS		
6/20/19	Heavy Metal Scrap	state redemption		1,815	1,815	\$ 1.2900		7/9/19	\$ 2,341.35	TS	6/3/19 - 6/20/19	PET1
7/25/19	Green Earth	plastic #1	1	620						TS		
7/25/19	Heavy Metal Scrap	state redemption		620	620	\$ 1.2900			\$ 799.80	TS	6/27/19 - 6/27/19	PET1
7/25/19	Green Earth	plastic #1	3	1,742						TS		
7/25/19	Heavy Metal Scrap	state redemption		1,742	1,742	\$ 1.2600			\$ 2,194.92	TS	7/8/19 - 7/23/19	PET1



PALA 2014/2015 CLEANUP SUMMARY REPORT

Pala Band of Mission Indians, Pala Environmental Department
Property, Tires, Batteries, E-Waste, and Household Hazardous Waste Cleanups

Pala Band of Mission Indians has expanded their recycling and clean-up efforts in the 2014 – 2015 year, by providing more clean-up opportunities to the community. We offered year-round waste oil and battery disposal services, once a month tire round-up events, and quarterly Household Hazardous Waste Events for e-waste and HHW collection. The Tribe has found 2 different grant funding sources to help pay for these events; the Tribe has also funded some of the clean-ups themselves through in-kind services by Tribal Services, the Tribal Transfer Station, and other tribal staff hours. The Tribe has also been able to reduce their dependence on outside (often costly) contractors. We now utilize our Tribal Transfer Station staff to remove any recyclables, metals, tires, batteries, and hazardous wastes first and then we have our Tribal Services staff proceed with the clean-up (using EDCO bins for trash). This has helped us to reduce the amount of grant funding needed for each site, and increase the number of clean-ups we are able to conduct during the year.

In 2014-2015, the Tribe used \$ grant funded dollars from SWAP, NPS 319 base, and GAP funding. These grants helped the Tribe to remove:

- 9.14 tons of trash/metal/property cleanups
- 0 gallons of HHW/property cleanups
- Numerous junkcars, RVs/trailers, green waste, appliances, wood, etc.
- 1,582 tires
- 8,919 batteries (car/household)
- 498 e-waste items (35,981 pounds of e-waste)
- 1,117 gallons of household hazardous waste & 338 Light Bulbs

The Tribe has also been steadily increasing the number of recycling and trash containers around the community, in order to help local community members make good choices when disposing of their trash. We hope to continue with our excellent progress, and continue to expand our clean-up and recycling efforts here at Pala.

HOUSEHOLD HAZARDOUS WASTE EVENTS:

Total Cost:	\$ 6,858.74
Total Removed:	1117 gallons of waste; 338 lights
<i>Waste Oil--</i>	550 gallons
<i>Paints/Pesticides/Other--</i>	567 gallons
<i>Light Bulbs --</i>	338 light bulbs
Grant Funding:	SWAP, 319 Base
Event Dates:	1 event quarterly

2013/2014 HHW Inventory				
Category	Type of Waste	Size of Container	Quantity	TOTAL AMOUNT (in gallons)
Paint	Paint, Latex/Water	1 gallon	440	440
	Paint, Oil	1 gallon	0	0
	carbon	1 gallon	55	55
Pesticide / Herbicide	Fertilizer	1 gallon	14	14
	Pesticide	1 gallon	30	30
Cleaners & Chemicals	Waste flammable liquid	1 gallon	14	14
	Waste corrosive solids	1 gallon	14	14
	Oily/Gasoline Water	1 gallon	200	200
	Waste Oil	1 gallon	350	350
Universal Waste	Fluorescent tubes, 2 ft	1 tube	0	n/a
	Fluorescent tubes, 3 ft	1 tube	0	n/a
	Fluorescent tubes, 4 ft	1 tube	338	n/a
	Waste lamps	1 lamp	0	n/a
Total Light Bulbs			110	Total gallons
				1406



Packaged HHW, ready for pickup



HHW Storage Cabinets



Waste Oil Recycling



PROPERTY CLEANUPS & ILLEGAL DUMPSITES:

Total Cost:	\$ 1,335.78
Total Removed:	9.14 tons
<i>Trash & Metal Tons--</i>	9.14 tons
<i>HHW Material--</i>	0 gallons
<i>tires, mobile homes, cars/RV's</i>	
Grant Funding:	319 NPS
Event Dates:	October 2013 – September 2014

TIRE CLEANUP EVENTS:

Total Cost:	\$ 5,600.00
Total Removed:	1,582 tires
Grant Funding:	CalRecycle Tire Grant
Event Dates:	Quarterly Collection Events

BATTERY CLEANUP EVENTS:

Total Cost:	\$ 1,664.00
Total Removed:	8,919 batteries (3,899 lbs)
<i>Auto Batteries--</i>	225 batteries (3,533 lbs)
<i>Household Batteries--</i>	8,694 batteries (366 lbs)
Grant Funding:	319 NPS
Event Dates:	Continuous Community Collection

E-WASTE CLEANUP EVENTS:

Total Cost:	\$0.00
Total Removed:	498 items
<i>Number of Items--</i>	498 items
<i>Total Weight--</i>	35,981 pounds
Grant Funding:	none
Event Dates:	1 event per month

HOUSEHOLD HAZARDOUS WASTE CLEANUP EVENTS:

Total Cost:	\$ 4,526.03
Total Removed:	1,117 gallons of waste; 338 lights
<i>Waste Oil--</i>	550 gallons
<i>Paints/Pesticides/Other--</i>	567 gallons
<i>Light Bulbs --</i>	338 light bulbs
Grant Funding:	Tribe; SWAP FY13/14
Event Dates:	3 events during year

Grant Reporting



NOW
YOU
KNOW...

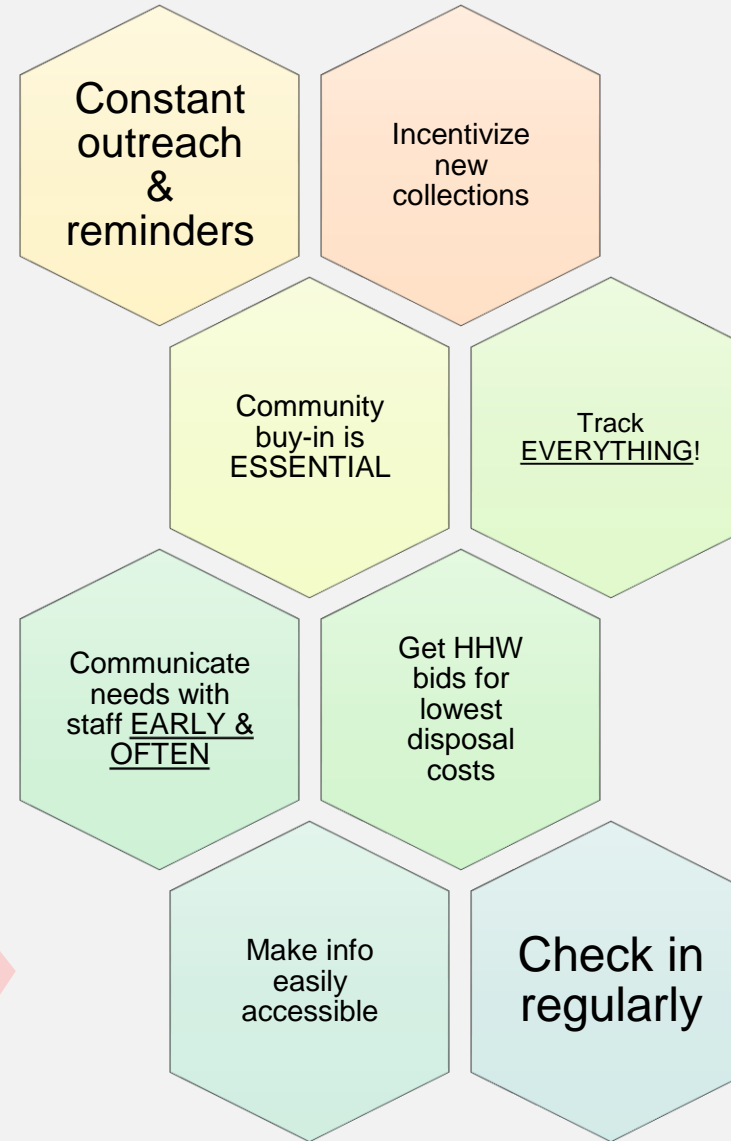
AND
**KNOWING IS
HALF THE BATTLE.**

Lessons
Learned

LESSONS LEARNED

This is how it works in an IDEAL world...
..but we live in the REAL world.

The importance of STAFF buy-in cannot
be overstated enough.





PALA ENVIRONMENTAL DEPARTMENT

www.ped.palatribe.com

THANK YOU

awallick@palatribe.com

Alexis Wallick & Heidi Brow

hbrow@palatribe.com