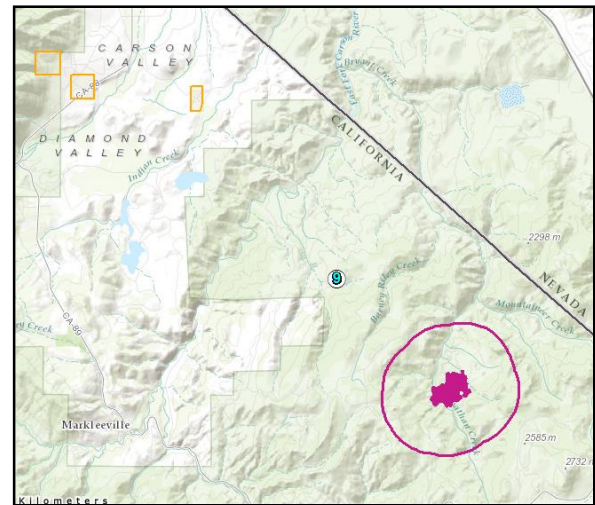




Leviathan Mine Superfund Site : **The Washoe Tribe**


| | |
|--|--|
| <p><u>Case Study: Tribe Information</u></p> | <ul style="list-style-type: none"> - The Leviathan Mine Superfund Site is located in Alpine County, CA on the eastern slope of California's Sierra Nevada. Community members of the Washoe Tribe of Nevada and California live downstream from tributaries of the Leviathan Mine and Washoe Tribal members continue traditional subsistence and cultural practices in the area. - The Washoe petitioned the USEPA to investigate contaminants from the site (1997). - NPL documents of interest may be available through ITEP's resource library. |
|--|--|

| | |
|---|--|
| <p><u>EPA NPL Status Information</u></p> | <ul style="list-style-type: none"> - Recent Site History: Copper sulfate mining began in 1863, but ended in 1872; this was due to the high sulfur content of the ore. In 1954, the Anaconda Company transformed the operations into an open pit Sulphur mine. Operations at the 250 acre site ended in 1962. Precipitation into and through the open pit and overburden piles created acid mine drainage that discharged directly into Leviathan Creek. The contaminants have eliminated aquatic life in creeks downstream of the mine. |
| <p><u>Map Key</u> Native Lands — NPL Site ● 4 Mile Buffer —</p> | <ul style="list-style-type: none"> - Response activities: The site was listed on the NPL in 2000. The next step is the remedial investigation/feasibility study. |



<http://superfund.ciesin.columbia.edu/sfmapper/mapviewer.jsf?width=515&height=596>
https://www.eduplace.com/state/ca/pdf/ca_map.pdf, Photo: Wikimedia Commons

| | |
|---|--|
| <p><u>Primary Contaminants</u></p> | <ul style="list-style-type: none"> - Acid Mine Drainage - Aluminum - Arsenic - Iron - Nickel - Sulfuric Acid |
|---|--|

| | |
|--|---|
| <p><u>Contacts</u></p>  | <p>ITEP's Tribal Waste & Response Program:</p> <p>Todd Barnell, todd.barnell@nau.edu Julie Jurkowski, julie.jurkowski@nau.edu</p> |
|--|---|